



**Compact, connected, and  
reliable: Unleash high  
performance for your  
business**

---

**FORMULA M 55-75**



# Introducing the new FORMULA M fixed-speed screw compressor

**Experience its exceptional  
performance and reliability today.**

**Connectivity and optimisation drive  
superior performance.**

Introducing our new range of compressors, proudly embodying the increased performance and reliability that the ABAC brand is known for.

With advanced connectivity and intuitive controls, these compressors bring intelligence, ease of use, and valuable insights to your operations.

By harnessing these features, you can effectively reduce operating costs and boost productivity, all while tailoring the compressor to your specific situation and needs.

**Are you ready to explore and  
experience the exceptional  
performance of our  
new compressors?**



// 3



// 5



# Key Differentiators

Through meticulous optimisation of each component, we proudly present our most innovative compressor, delivering unparalleled performance and cutting-edge technology.

## // 1. Introducing the latest screw elements technology

- They offer exceptional performance and efficiency, surpassing expectations.
- Improved rotor profile minimises pressure losses for enhanced efficiency.
- Designed and manufactured in-house at our facilities in Belgium, ensuring meticulous craftsmanship and quality control throughout the production process.

## // 2. Infographic controller

- Featuring an intuitive full-colour graphical display with a touchscreen interface, providing a user-friendly and visually engaging experience.
- Equipped with integrated connectivity, enabling energy optimisation and facilitating cost savings through advanced monitoring and control capabilities.
- Designed in-house, ensuring meticulous attention to detail and tailored specifications for optimal performance and quality.

## // 3. Casted oil separator vessel

- The integrated minimum pressure valve (MPV) eliminates the risk of leakage, providing a reliable and secure operation.
- Designed for optimal oil separation and low oil carryover. Engineered for optimal oil separation, minimising oil carryover and ensuring superior performance.

## // 4. Quality filtration

- Safeguards internal components and prolongs the overall service life of the system.
- Durable air/oil/oil separator filters designed for heavy-duty usage, offering an extended lifetime and a low total cost of ownership.



## // 5. Separate coolers

- Separate oil and air coolers provide quality cooling and extended cooler lifespan.
- The system incorporates gliding rails, enabling effortless and secure removal for maintenance or servicing purposes.
- The system provides easy access for cleaning, allowing for convenient and hassle-free maintenance operations.
- Integrated water separation ensures dry and clean air output for coolers used on machines with integrated dryers.



## Key Features



### New air end

- The compression element is meticulously designed in-house, working in tandem with an IE4 efficiency motor. This synergistic combination delivers remarkable performance, reduces compression temperature, and ensures exceptional reliability. The result is an optimised system that operates efficiently while maintaining high levels of performance and dependability.
- Thanks to its superior component design, the system is engineered to thrive in environments with high ambient temperatures, capable of operating reliably and efficiently in temperatures up to 46°C.

## Introducing a high-powered smart cooling system

- Larger air-oil coolers guarantee your compressor's high cooling capacity, superior cooling efficiency, and enhanced reliability.
- The oversized fan enhances airflow and lowers the operating temperature, resulting in improved reliability.







### High-efficiency motor

- The system boasts an impressive IE4 Super Premium efficiency class, indicating its exceptional energy efficiency and reduced power consumption. This high-efficiency rating translates to cost savings and environmental benefits.
- With IP66 protection, the system is effectively shielded against the ingress of dust particles, ensuring reliable and uninterrupted operation even in dusty environments.



### Easy installation and service

- Easily removable panels and quick access to all service parts guarantee effortless maintenance.
- Low maintenance costs.



### Infographic controller

- The system is designed to be intuitive and user-friendly, ensuring a seamless and straightforward user experience.
- Gain remote and real-time insights into the performance of your compressed air system, allowing you to monitor its operation and performance conveniently from anywhere, at any time.
- Maintain precise control by regulating pressure within programmable limits, ensuring optimal operating conditions and performance.
- Incorporated programmed shutdown alarms provide added protection to the unit by triggering timely shutdowns in case of potential risks or critical conditions, safeguarding the equipment from damage.
- Equipped with a programmed service interval meter, the system automatically notifies the customer when maintenance is due, ensuring timely servicing and reducing the risk of overlooked service requirements.

## Full insight into your compressor system with the ES4000Swipe controller

The ES4000S model offers an intuitive user interface with easily recognisable symbols, ensuring effortless navigation. For a more advanced user experience, we recommend as an option the ES4000T, equipped with a cutting-edge 4.3" full-colour touchscreen display, providing a state-of-the-art interface.



Moreover, the ES4000S & ES4000T models elevate user convenience to the next level. With their built-in connectivity feature, you can monitor your compressor's service status remotely, in real-time, from anywhere, enhancing the reliability of your overall operations.

Strategic service interventions can be scheduled proactively, minimising production downtime by detecting and addressing potential issues before they escalate into operational setbacks.

# Performance data

## Fixed speed FORMULA M 55-75

Model	Max. working pressure	Reference working pressure	Free air delivery @ reference conditions			Motor power		Noise level	Cooling air volume	Weight	Compressed air output STD diameter
	bar(g)	bar(g)	m³/h	l/min	cfm	kW	Hp	dB(A)	m³/h	kg	
<b>FORMULA M 55</b>	7.5	7	619	10317	364	55	75	71	2.62	1123	2 1/2"
	8.5	8	580	9667	341	55	75	71	2.62	1123	2 1/2"
	10	9.5	518	8633	305	55	75	71	2.62	1123	2 1/2"
<b>FORMULA M 75</b>	7.5	7	792	13200	466	75	100	73	2.62	1189	2 1/2"
	8.5	8	767	12783	451	75	100	73	2.62	1189	2 1/2"
	10	9.5	709	11817	417	75	100	73	2.62	1189	2 1/2"



# Built-in options

## Air Quality



### Incorporated water separation drains

To facilitate effective condensate drainage.

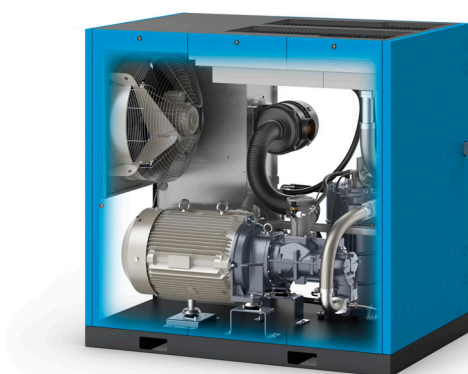
### Tropical thermostatic valve

Designed for optimal performance in hot and humid environments.

### Freeze protection

Ensures a consistent oil temperature within the oil container to prevent condensation.

## Energy Saving



### Integrated energy recovery

Harnesses up to 75% of the thermal energy generated during the compression process, enabling its utilisation for water heating in boilers, showers, and more.

### Central compressor control

Incorporates advanced multi-compressor control technology, allowing seamless coordination and optimisation of up to 6 compressors. This intelligent system effectively minimises system pressure and reduces overall energy consumption.

## A range of options

// Integrated Energy Recovery

// Oil - 8000h oil synthetic

// Water Separation drain - Electronic

// Expansion Module

// Upgrade to Touch

// Prefilter Kit

// Power duct fan - AC

// Oil preheater = freeze protection

// Oil - 4000h oil food grade

// ECO2i

// ECO4i

// ECO6i

// Tropical Thermostat





**Air. Anytime. Anywhere.**

**Reliability and excellent  
performance for your business  
FORMULA M 55-75**

---

**Contact your local ABAC representative now**

[www.abacaircompressors.com](http://www.abacaircompressors.com)

©ABAC 2023

The contents of this publication are the copyright of the publisher and may not be reproduced (even extracts) unless prior written permission is granted. Every care has been taken to ensure the accuracy of the information contained in this publication but no liability can be accepted for any loss or damage whether direct, indirect or consequential arising out of the use of the information contained herein.

Certain image(s) used under license from Shutterstock.com.